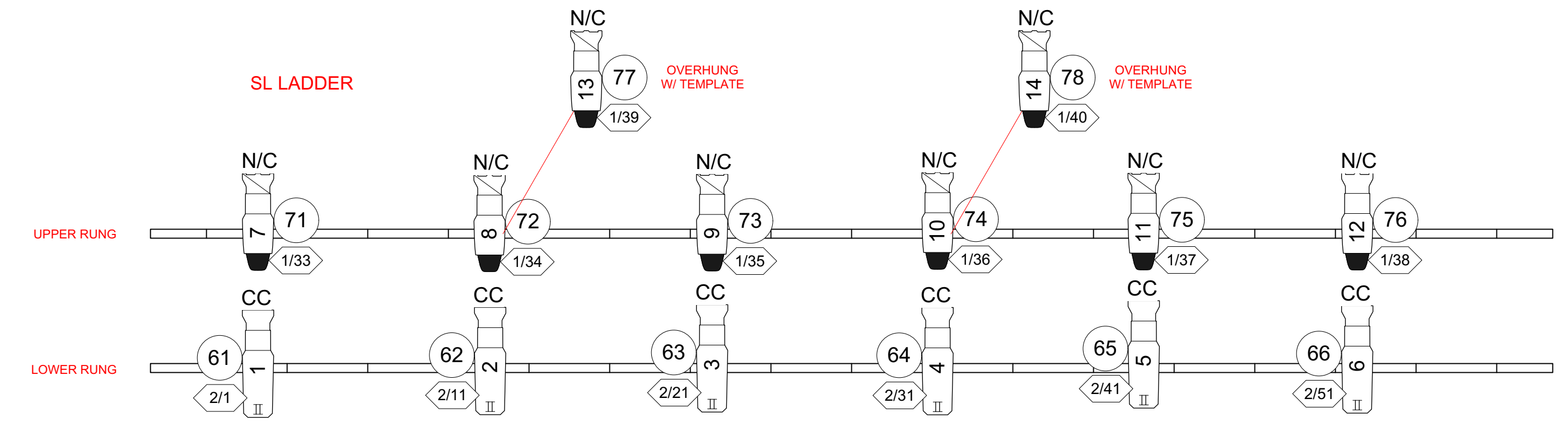
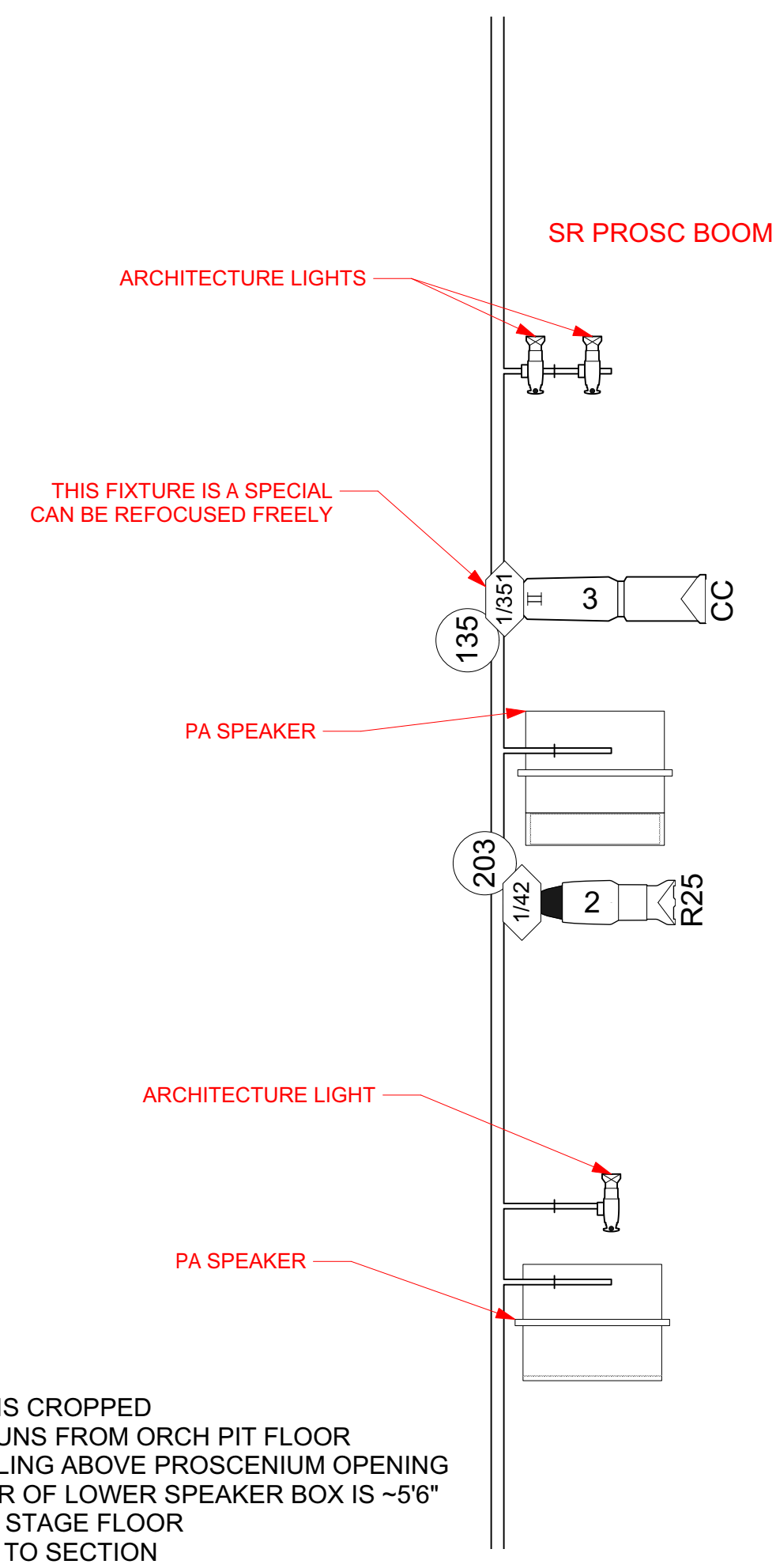


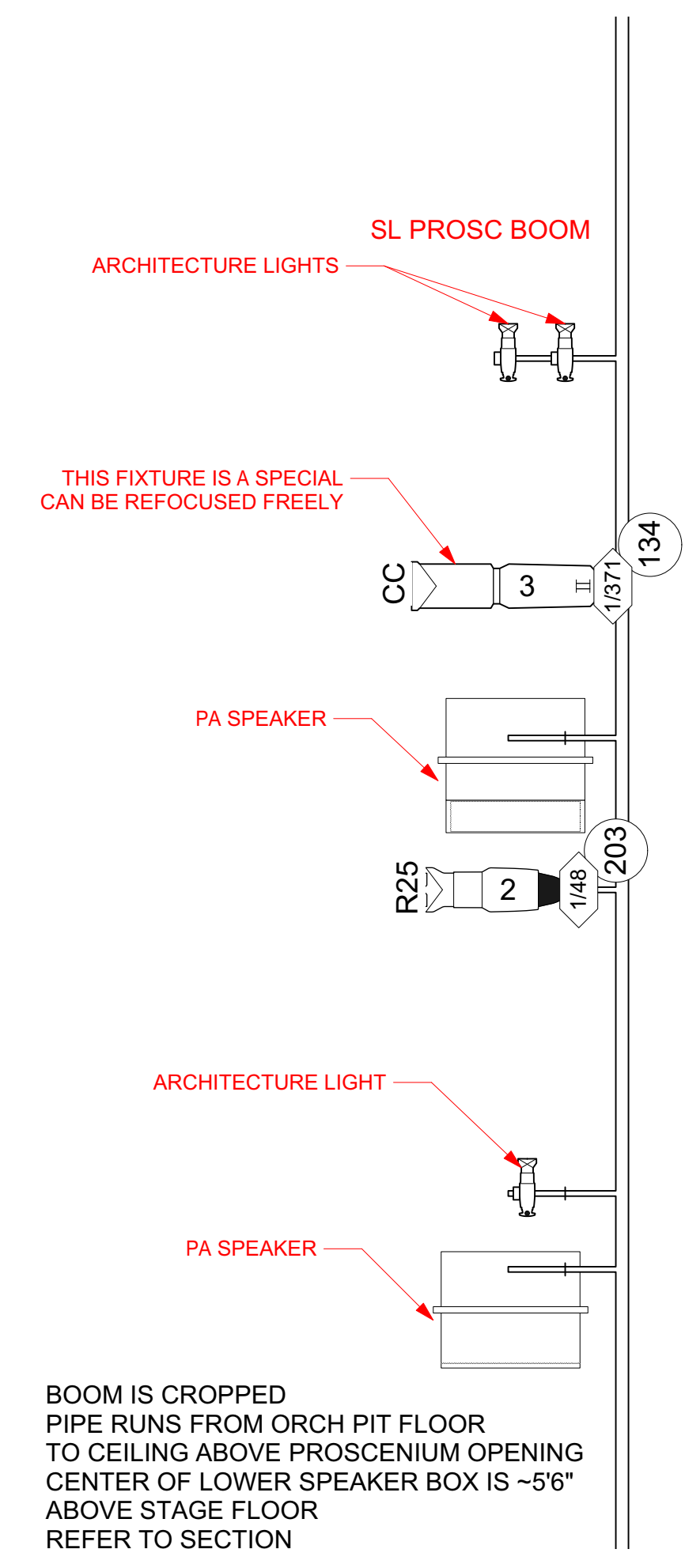
1 STAGE RIGHT LADDER POSITION DETAIL
Scale: 1/2" = 1'-0"



2 STAGE LEFT LADDER POSITION DETAIL
Scale: 1/2" = 1'-0"



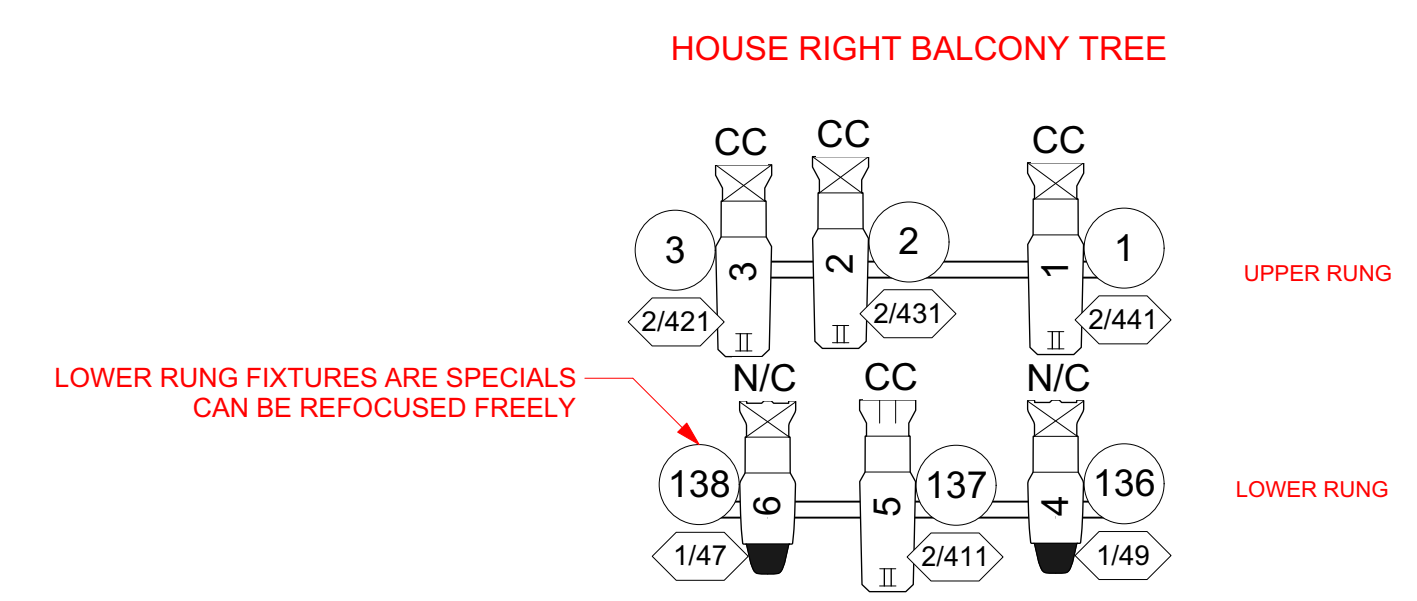
3 STAGE RIGHT PROSCENIUM BOOM POSITION DETAIL
Scale: 1/2" = 1'-0"



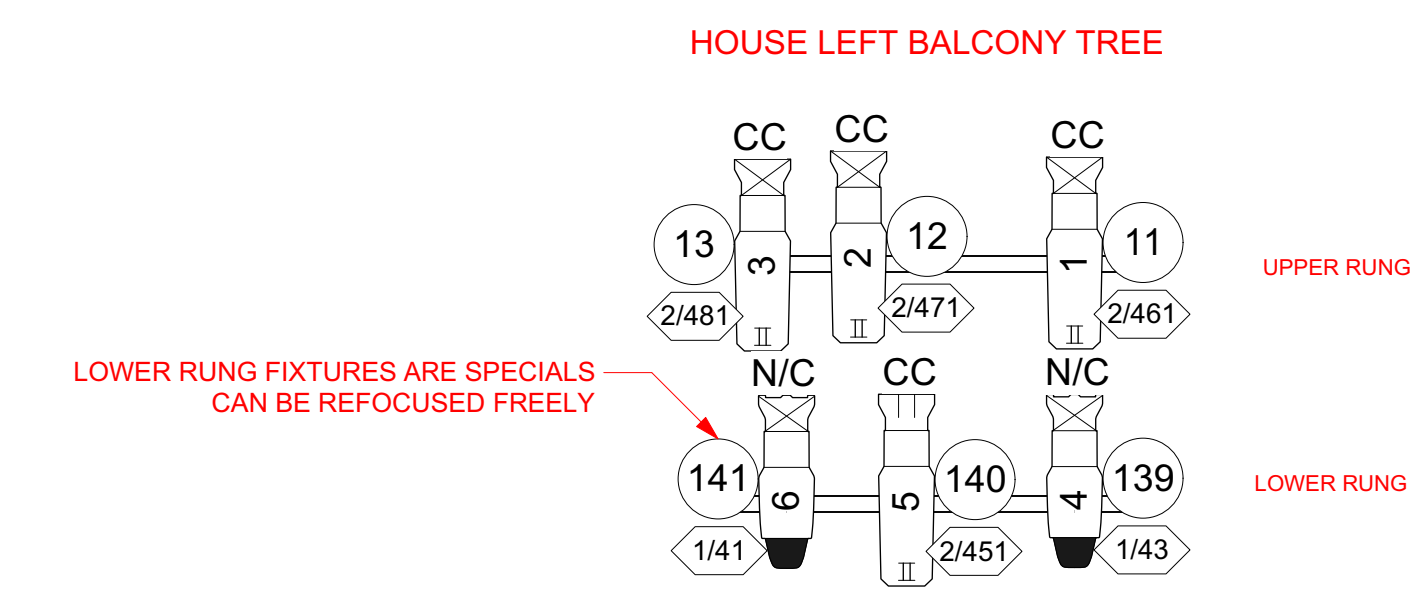
4 STAGE LEFT PROSCENIUM BOOM POSITION DETAIL
Scale: 1/2" = 1'-0"

BOOM IS CROPPED
PIPE RUNS FROM ORCH PIT FLOOR
TO CEILING ABOVE PROSCENIUM OPENING
CENTER OF LOWER SPEAKER BOX IS ~5'6"
ABOVE STAGE FLOOR
REFER TO SECTION

BOOM IS CROPPED
PIPE RUNS FROM ORCH PIT FLOOR
TO CEILING ABOVE PROSCENIUM OPENING
CENTER OF LOWER SPEAKER BOX IS ~5'6"
ABOVE STAGE FLOOR
REFER TO SECTION



6 HOUSE RIGHT BALC TREE POSITION DETAIL
Scale: 1/2" = 1'-0"



5 HOUSE LEFT BALC TREE POSITION DETAIL
Scale: 1/2" = 1'-0"

INSTRUMENT KEY

	AltmanSpectra Cye 100	14
	ETC D60 Lustr SELO3070	12
	ETC Source4 19deg 750W	4
	ETC Source4 26deg 750W	30
	ETC Source4 36deg 750W	3
	ETC Source4 50deg 750	2
	ETC Source4 LED2LS 14deg	2
	ETC Source4 LED2LS 19deg	6
	ETC Source4 LED2LS 25deg-50deg Zoom	2
	ETC Source4 LED2LS 26deg	10
	ETC Source4 LED2LS 36deg	30
	ETC Source4 Mini LED 19deg	6
	ETC Source4 PARNel	12

RELAY ADDRESSES:
23/24/45/46
51/52/53/54
MUST BE PARKED AT FULL