

ACADEMY OF MUSIC THEATRE GROUND PLAN WITH LIGHT PLOT

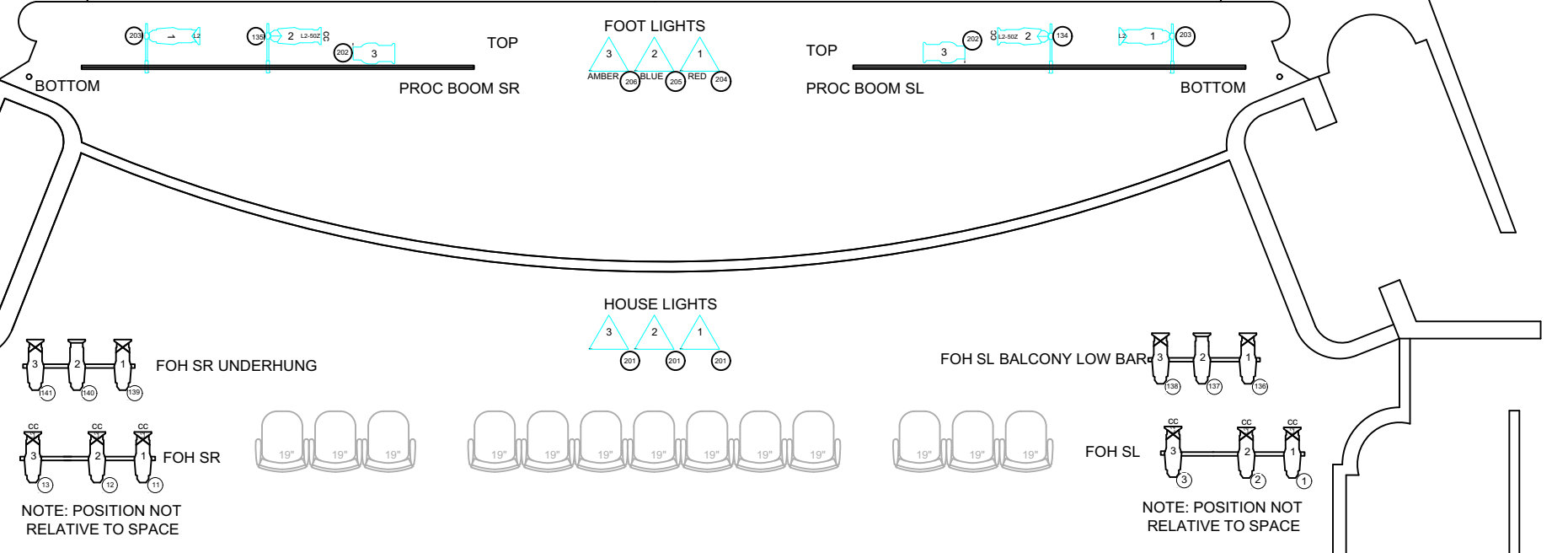
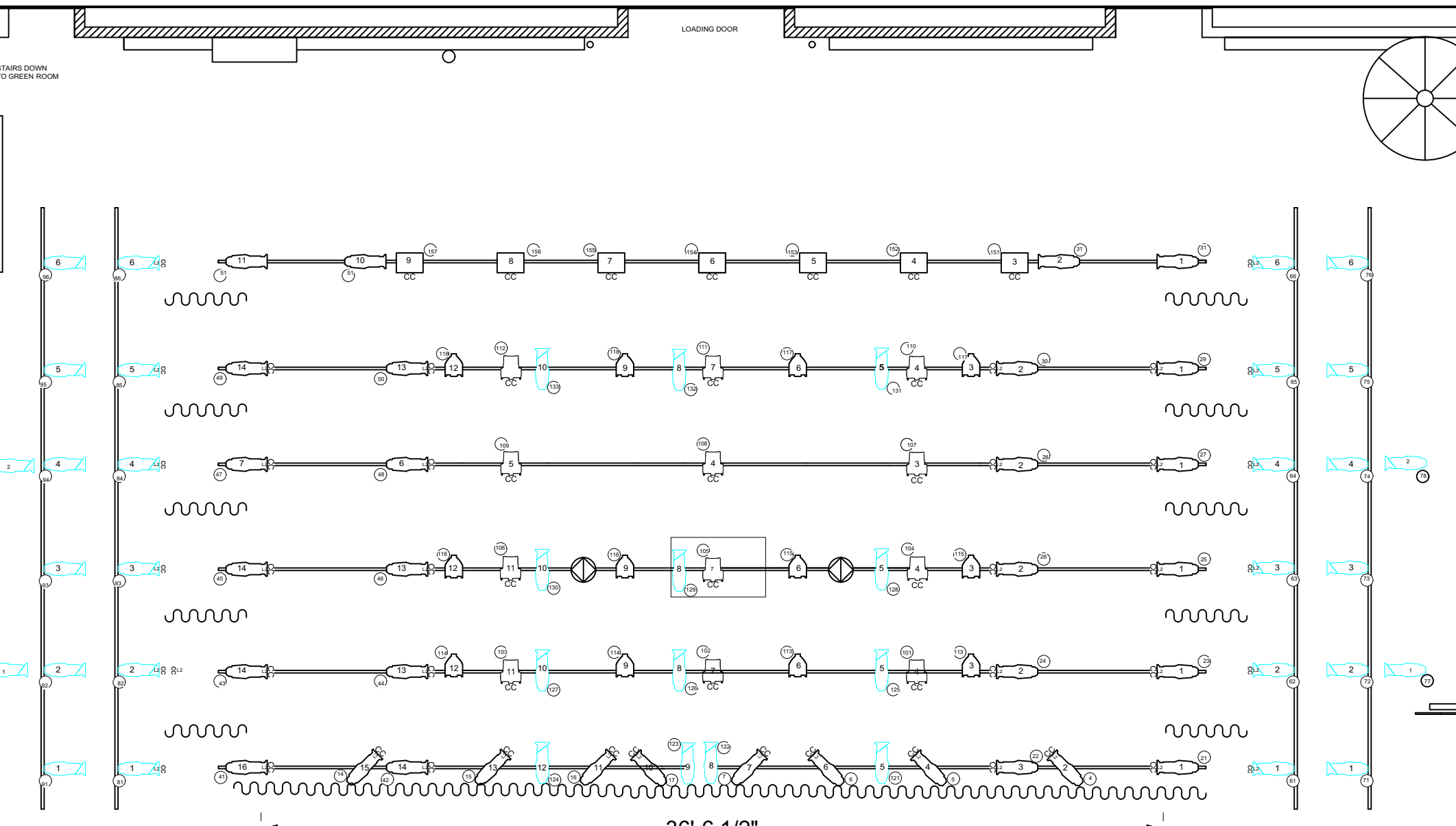
SCALE 3/16" = 1'-0"

DATE: 09/27/2021

- 29 - TUTTLE DROP 25'-8"
- 28 - CYC - 25'
- 27 - EMPTY 23'10"
- 26 - 6th ELECTRIC 23'0" (PIPE TRIM 25')
- 25 - EMPTY 22'
- 24 - FULL BLACK 21'6"
- 23 - 4th LEGS 20'8"
- 22 - NO PIPE 20'
- 21 - EMPTY 19'4"
- 20 - 5th ELECTRIC 18'8" (PIPE TRIM 23')
- 19 - BORDER 17'4"
- 18 - EMPTY 16'9"
- 18a - 3rd LEGS - 17'
- 17 - EMPTY 16'0"
- 16 - 4th ELECTRIC 14'10"
- 15 - 2nd LEGS 13'0"
- 14 - BORDER 12'7"
- 13a - EMPTY 12'4"
- 13 - EMPTY 12'0"
- 12 - EMPTY - PARTIAL PIPE 11'2"
- 11 - 3rd ELECTRIC 10'7" (PIPE TRIM 23')
- 10 - EMPTY 8'10"
- 09a - 1st LEGS - 8'-8"
- 09 - BORDER 8'6"
- 08 - EMPTY - SHORT PIPE 7'6"
- 07 - EMPTY 7'1"
- 06 - SECOND ELECTRIC - 6'6" (PIPE TRIM 23')
- 05 - MOVIE SCREEN - 5'-0" (PERMANENT - VERTICAL LIFT ONLY)
- 04 - RUBY TRAVELER - 4'-0" (PERMANENT - CENTER PART TRAVEL ONLY)
- 03 - EMPTY 3'8"
- 02 - EMPTY 2'11"
- 01 - FIRST ELECTRIC - 2'6" (PIPE TRIM 22')
- GRAND DRAPE (PERMANENT VERTICAL LIFT ONLY) 1'6"
- FIRE CURTAIN - 0'8"

INSTRUMENT KEY

PARKED ADDRESSES:
23/24/45/46
51/52/53/54



STAIRS DOWN TO GREEN ROOM

LOADING DOOR

COMPANY SWITCH

NOTE: POSITION NOT RELATIVE TO SPACE

NOTE: POSITION NOT RELATIVE TO SPACE